



# MS ENG CO.

MS(MyongSung) is One of The Biggest  
Korean Spare Parts Manufacturers  
in Concrete Pumping Business !





# ELBOWS

(TRIPLE-HEAT TREATED CASTING ELBOWS)

PICTURES OF MS ELBOWS



DELIVERY ELBOWS

DURABILITY  
80,000 M<sup>3</sup>



90° TWIN ELBOWS

HARDENED  
25,000 M<sup>3</sup>



90° 275R ELBOWS

ZX FLANGED HIGH  
PRESSURE ELBOWS



90° ZX 281R ELBOWS(PM)



10° 250R ELBOWS



15° 218.5R ELBOWS



20.5° 218.5R ELBOWS



30° 218.5R ELBOWS



30° 280R ELBOWS



45° 275R ELBOWS



45° 275R ELBOWS



SHORT180R 90° ELBOWS



6inch 90° HANWOO  
DELIVERY ELBOWS



6inch 90° DNS DELIVERY  
ELBOWS



6inch HIGH PRESSURE  
TYPE PM 90°  
DELIVERY ELBOWS



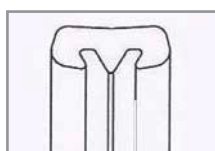
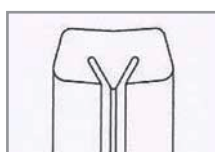
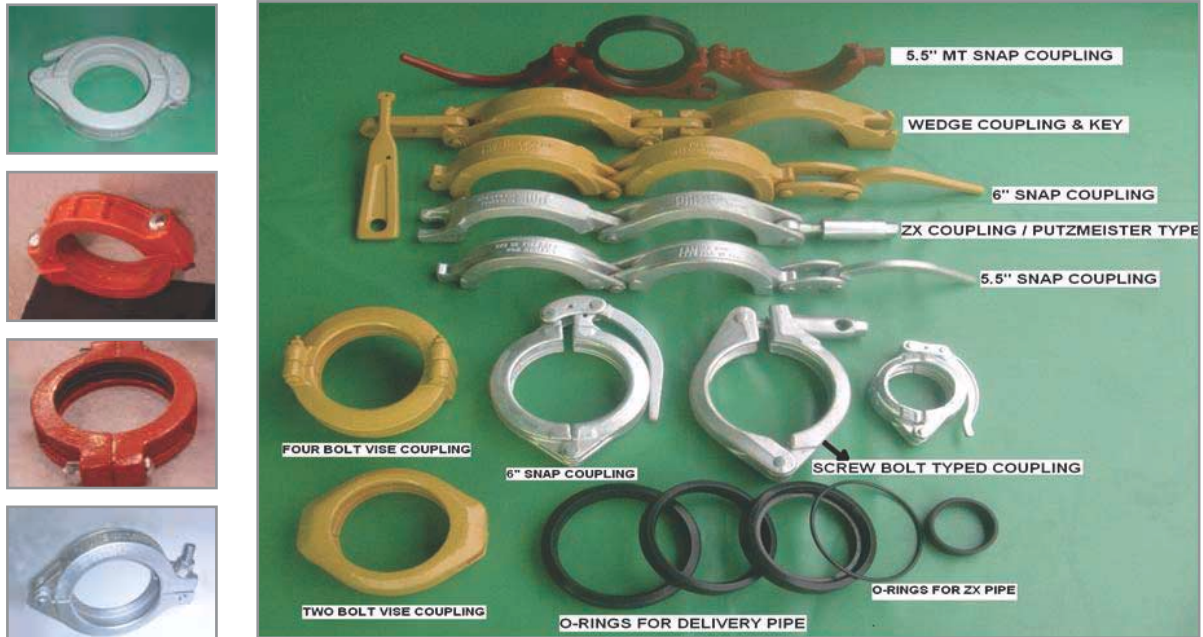
90° 250R ELBOWS

MS ISD Co. is only company that has their own mold and casting factory in Korea.

With your request of any kinds of casting product, MS ENG Co. can supply you verified parts!

# COUPLINGS & GASKETS

(Forged and Zinc-plated by Galvanization)

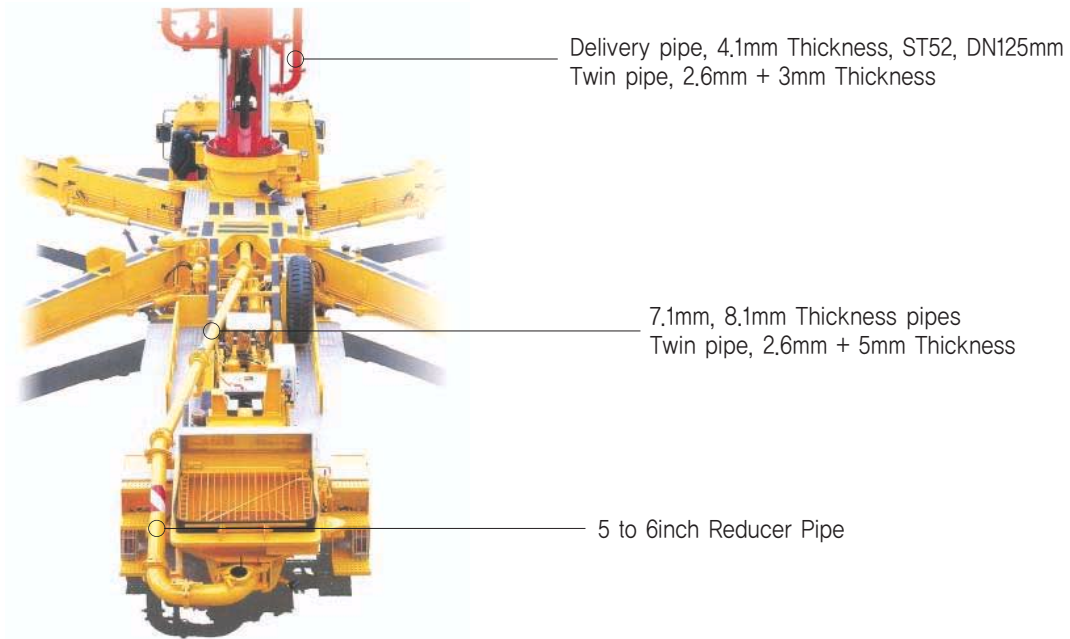


P	S	Ni	Cr	Mo
COUPLING	2			
	2.5			
	3			
	3.5			
	4			
	4.5			
	5			
	5.5			
	6			
GASKET	2	HD		
	3	HD		
	4	HD		
	5	HD		
	2	METRIC		
	3	METRIC		
	4	METRIC		
5	METRIC			

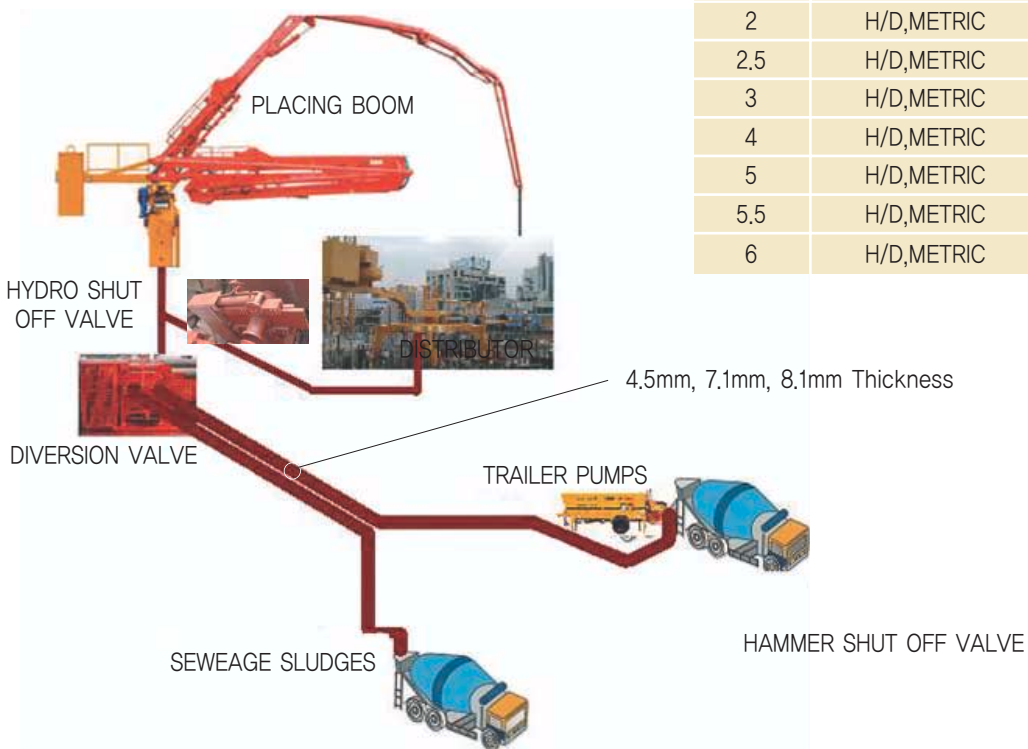


# DELIVERY PIPES & WELD ENDS

(BOOM PIPE, DECK PIPE, LINE PIPE, WELD ENDS)

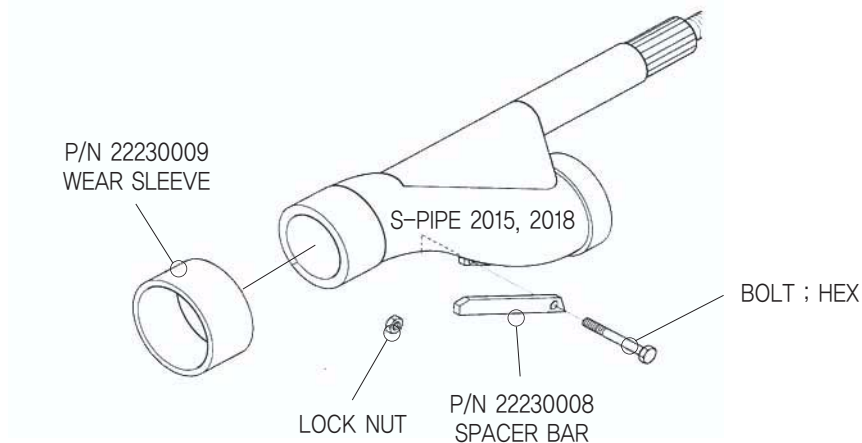


Size	Type	Remark
2	H/D,METRIC	
2.5	H/D,METRIC	
3	H/D,METRIC	
4	H/D,METRIC	
5	H/D,METRIC	
5.5	H/D,METRIC	
6	H/D,METRIC	



# CONCRETE VALVE

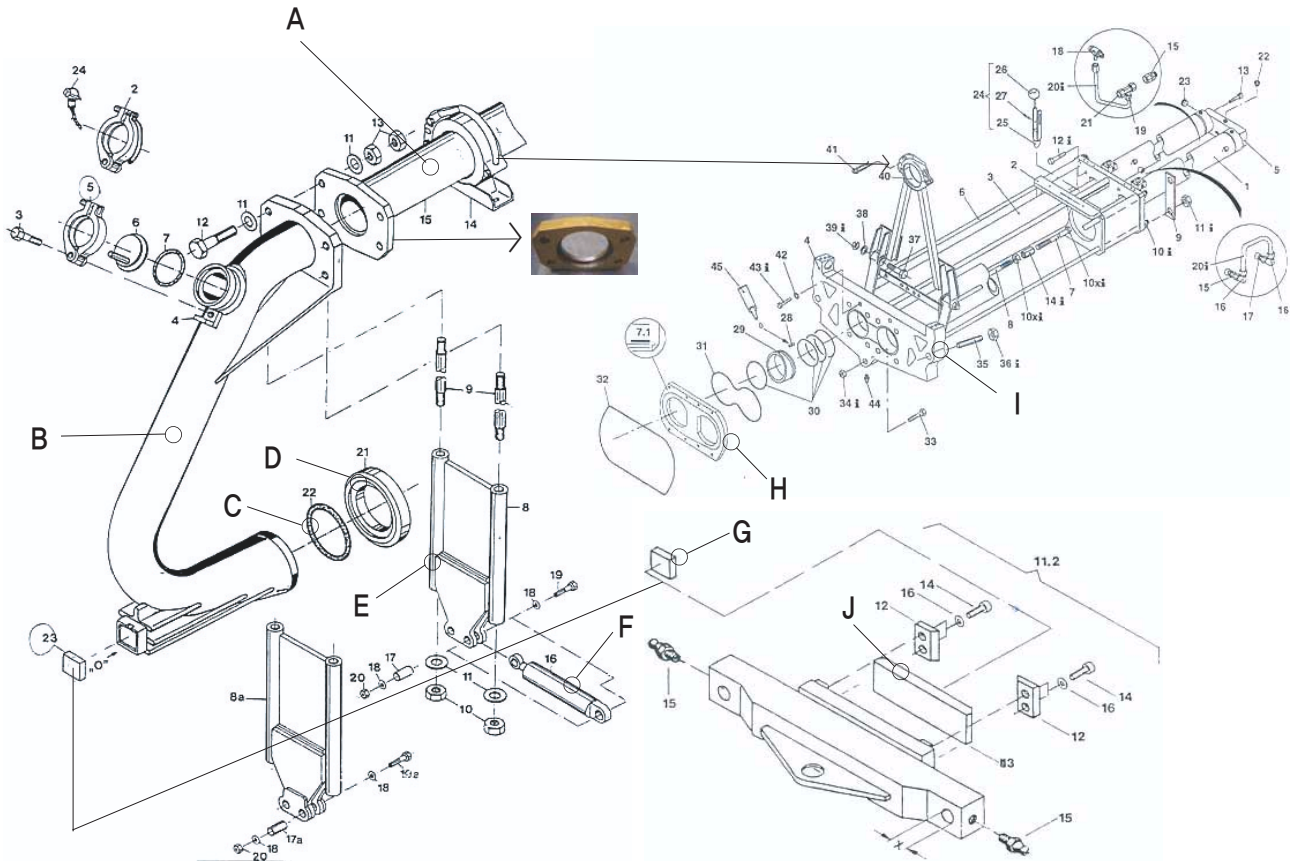
WITH S-TUBE SYSTEM(S2018, 2318, 2015, 2012, 1812)







NAME	SPECIFICATION	SIZE	REMARK
S-TUBE (S-PIPE)	2018	200mm~180mm	
	2318	230mm~180mm	Big mouth
	2015	200mm~150mm	High pressure type
	2012	200mm~120mm	High pressure type
	1812	180mm~120mm	High pressure type
WEAR SLEEVE	2018,2318,2015,2012,1812		Chromium plating
SHAFT	∅80, ∅90		∅90 (High pressure type)
WELDING RING			PM, HW, Big Mouth type

# CONCRETE VALVE

## WITH TRUNK TYPE B2214, B2614



	DESCREPTION	SPECIFICATION		REMARK(MS#)
A	Pressure pipe			A,B,C,D type
B	C-TRUNK	B2214 B2614		
C	O-ring			
D	Wear ring			
E	Lever			
F	Hydro cylinder			
G	Wear plate	Square type Round type		
H	Spectacle wear plate	Square type Round type		
I	Cross member			
J	Wear strip Pressure plate	Square type Round type		

# FLAP ELBOWS, REDUCER,



1200MM 6INCH TO 5INCH REDUCERS



FLAP ELBOW TO REDUCER



MOLD FOR REDUCER PIPE



BEARING HOUSING FOR STATIONARY PUMPS



BEARING HOUSING with SEAL KIT



BEARING HOUSING for S1812 with SEAL KIT



NEW FLAP ELBOWS (PUTZMEISTER TYPE)  
FLAGE AND BODY - ALL IN ONE TYPE

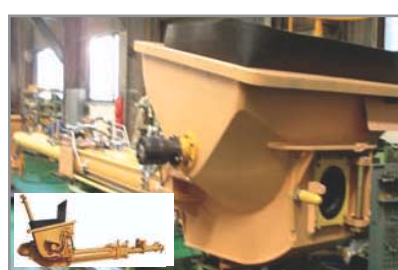


MOLD FOR FLAP ELBOWS





# HOPPER & PARTS



CORE PUMP ASS'Y



EZ CLEANING HOPPER



MSB905 HOPPER FOR STATIONARY AND TRUCK MOUNTED PUMPS

## MSB905 AND SPARE PARTS



PLUNGER CYLINDER



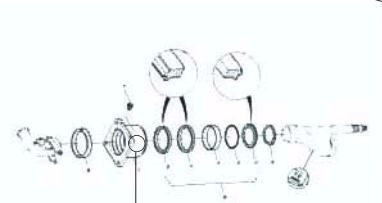
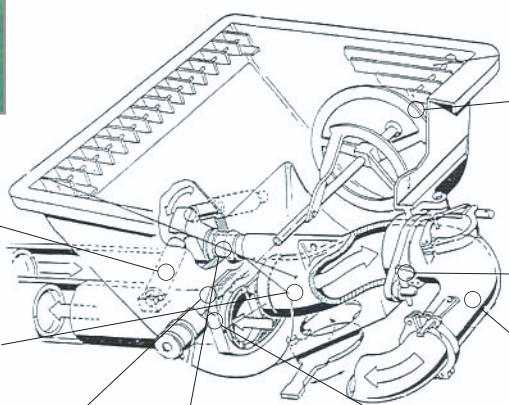
SWING LEVER



CONVEYING WORMS



PADDLES



BEARING HOUSINGS



SHAFT BEARING



DANFOSS MOTOR



END SHAFT & BEARING FLANGE



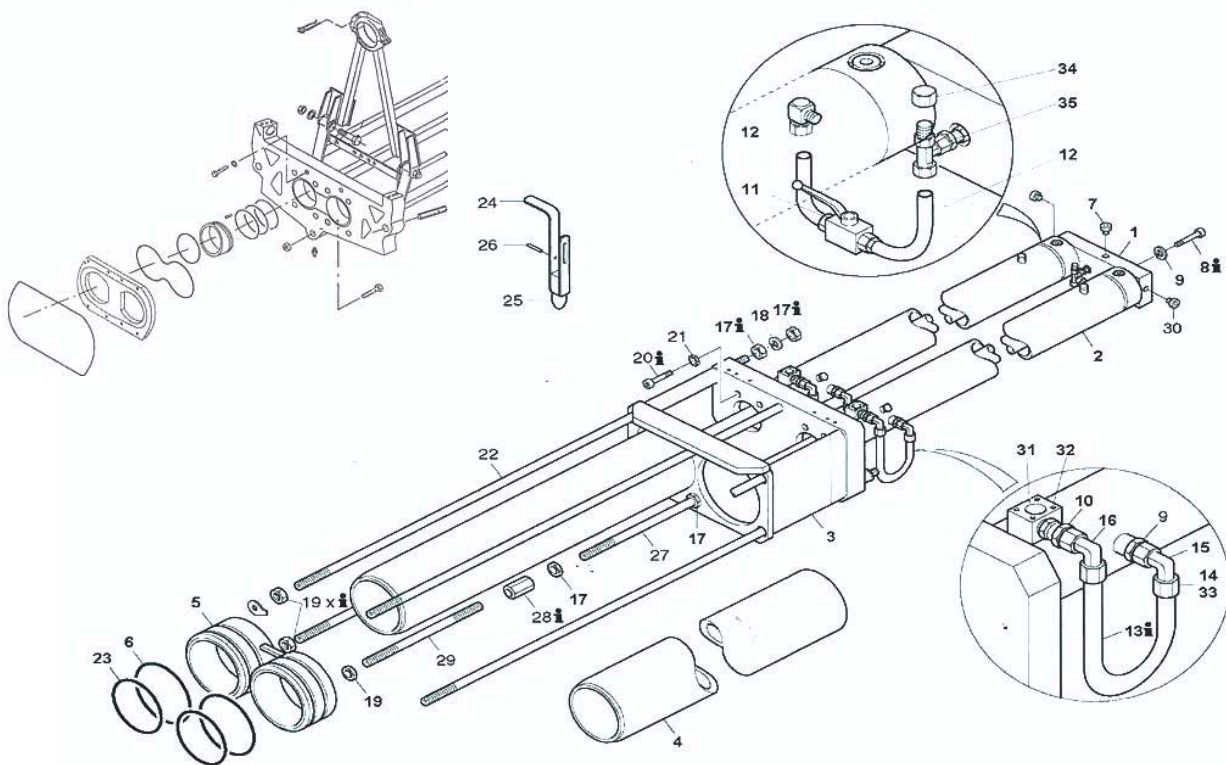
FLAP ELBOWS



WEDGE, HOLDER, TIE ROD

# CORE PUMP PARTS

## WITH S-TUBE & C-TRUNK SYSTEM

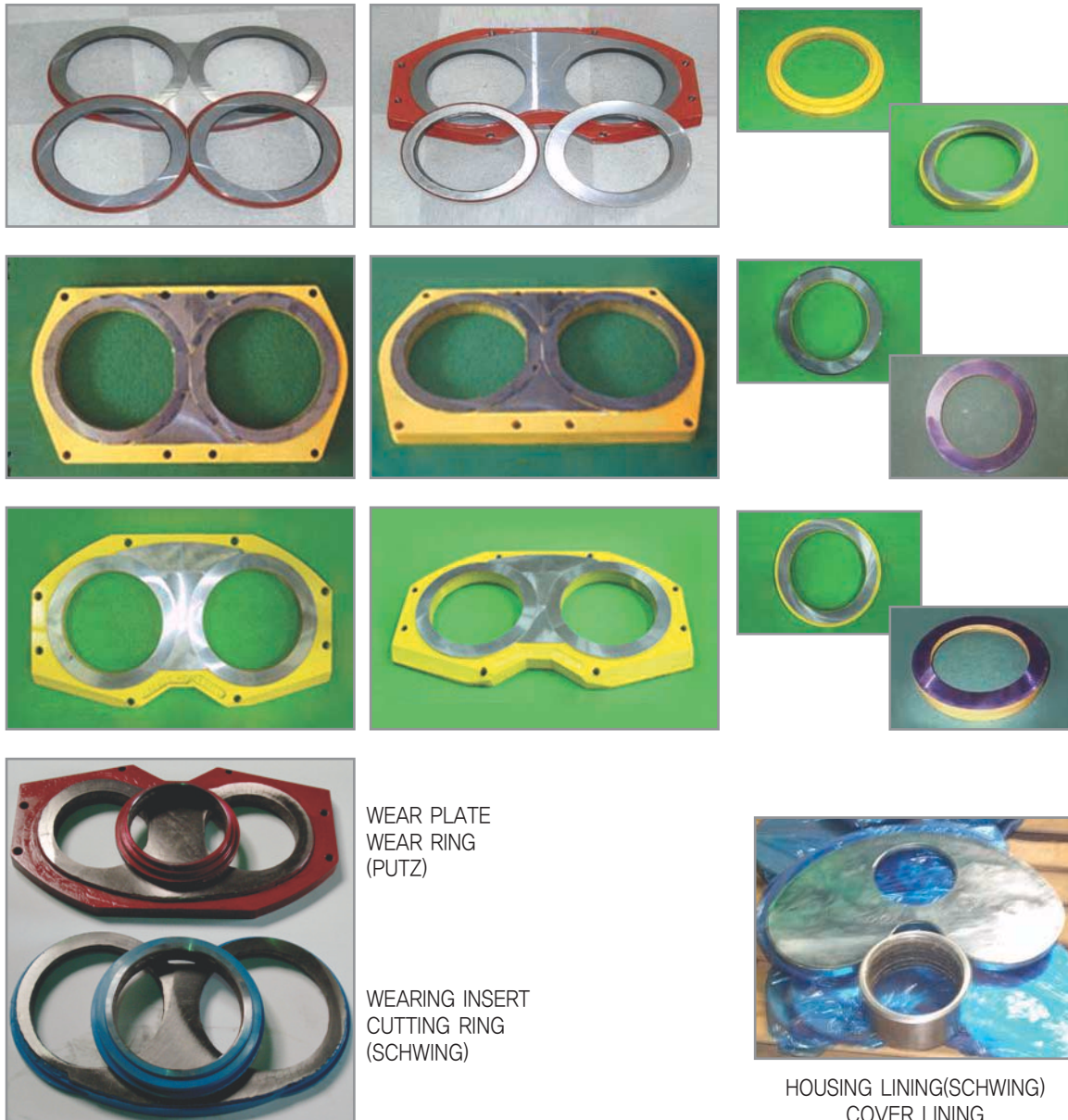


	P/N (PM#)	DESCREPTION	SPECIFICATION	REMARK(MS#)
1	052628003	Connecting plate		(MS#22430071)
2	262822000 262824008	Hydraulic cylinder Hydraulic cylinder	21000-140/80 21000-140/80	Driver cylinder (MS#23230167)
3	254934003	Water box	WK260	(MS#22410025)
4	239867001	Delivery cylinder	Φ230 x2100	(MS#23230168)
4	022051008	Delivery cylinder	Φ200 x2100	
4	261520002	Delivery cylinder	Φ230 x1400	
4	028800000	Delivery cylinder	Φ200 x1400	
5	234552007	Intermediate ring		BSF1408.9
5	252200001	Intermediate ring		BSF2100
5	261086009	Intermediate ring		Moli
5	262986005	Intermediate ring		36,43M "R"-type (MS#22430036)
5	234549007	Intermediate ring		BSA type
5	240440006	Intermediate ring		BSA 2110
5	240439004	Intermediate ring		BSA 2110



# WEAR PARTS

(WEAR PLATES AND WEAR RINGS)



TUNGSTEN CARBIDE TYPE (HRC61+) : LIFETIME=OVER 100,000M<sup>3</sup>

WELDING TYPE (DURO22) : LIFETIME = OVER 25,000M<sup>3</sup>

NOTE : LIFETIME CAN BE DIFFER DEPENDING ON CONDITIONS OF MATERIALS IN WORK SITE

# HIGH-RISE AND LINE PUMPS PARTS



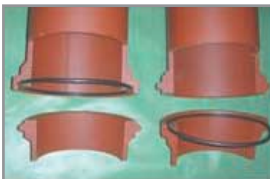
HAMMER SHUT-OFF VALVE  
AND DIVERSION ELBOWS

HYDRORIC SHUT OFF VALVE  
AND DIVERSION VALVE



ZX 3000MM PIPES(4.5mm, 7.1mm, 8.1mm)

DELIVERY LINES (PM TYPE)



SECTOIN OF ZX PIPES AND  
BENDE ZX ELBOWS (15°, 30°, 45°, 95°)

BENDE ELBOWS WITH METRIC TYPE  
FLANGES WELDED (15°, 30°, 45°, 95°)



ZX COUPLING 130BAR

Welded with SCHWING Type Flanges & Wedge Coupling



These High pressure Couplings are forged and zinc-plated by galvanization.

U-BOLT Coupling



Pressure Connection

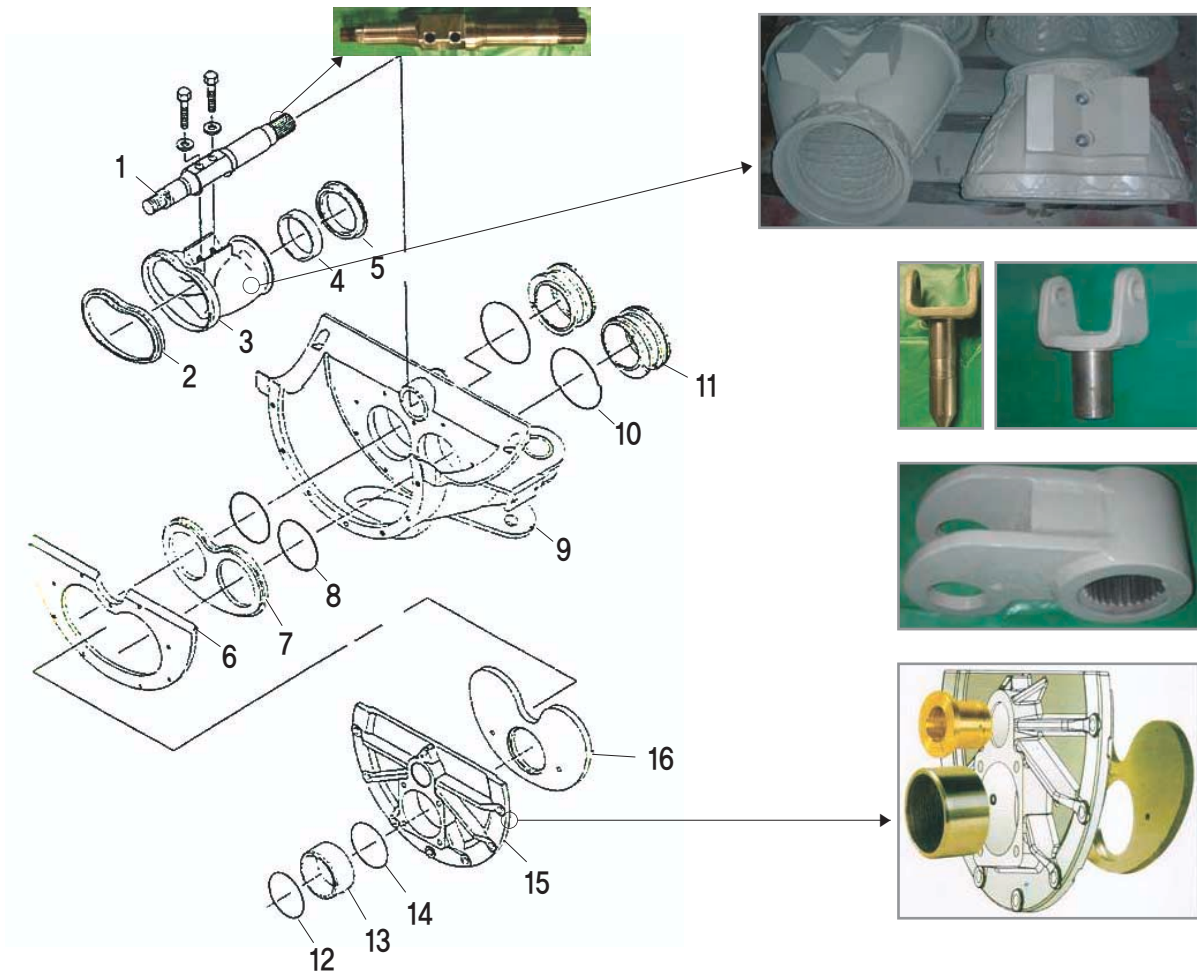
Pressure Guage

Pumping test at work site 2007. Apr.

275R 90° Elbow



# SCHWING PARTS



## LIST OF SCHWING PARTS

NO	IDENT-NO	DESCRIPTION	ID-NO	ORDER NO	REMARK
1	11753	piston ram	7908	8501020060008	BPL 801
2	"	extension	4067	7154203020107	
3	"	clutch	4065	7154203030102	
4	14010	flap gate valve	2348	7024201020206	
5	"	shell	14011	7154201030709	
6	"	guide sleeve	13830	7154201040704	
7	14009	flap gate valve	3037	7054201050209	
8	"	shell	14012	7054201030402	
9	"	bushing	13830	7154201040704	70×55×68
10	4151	piston bolt	1069	7024206050308	
11	"	piston disc	1075	7024206060303	
12	"	piston bushing	1081	7024206070309	
13	"	bearing bushing	1088	7024206080304	
14	"	spacing ring	1097	7024206090300	
15	"	sealing ring	1102	7024206100305	
16	"	grooved ring	3413	9942025901205	45/65/12.5
17	"	sealing gland set	7414	9942325938218	45/65/27.5
18	"	form lace ring	1108	7024206110300	50×16
19	67491	flanged shaft	4178	7034403020203	
20	"	flanged shaft	68275	7034403070200	
21	"	sealing cone	4928	9944524338516	
22	69209	rock valve	59467	7054223012106	BPL900
23	"	cutting ring 210	63939	7054223031500	210/180
24	"	pressure spring	64472	7054223030503	DN210
25	77885	wearing insert	74767	7054221013903	DN200
26	18045	housing lining	18046	7054222020202	DN180
27	"	cover lining	18029	7054222030100	
28	61270	slewing lever	18071	7054224030205	210/180
29	17550	slewing pivot	17552	7054224030108	
30	77960	material cylinder	6084	7164202010405	200×1600
31	14314	piston ram 200	43828	7154203013100	
32	61072	flanged shaft	61075	7054401040402	
33	"	sealing cone	61076	7054401090400	
34	61073	flanged shaft	61079	7054401070409	
35	78095	connection bend	26159	7855105000309	DN180
36	"	tapered bend	17547	7855013000809	7"×6"×90'
37	"	elbow DN150	69521	7855005002401	M/FE
38	"	taper tube	29799	785490900130012	1240MM
39	78571	rock valve	69209	7054223002100	BPL1200
40	78752	wearing insert	74768	7054221014004	DN230
41	18045	housing lining	18046	7054222020202	DN180
42	18045	cover lining	18029	7054222030100	BPL1200
43	69209	rock valve	59467	7054223012106	
44	"	slewing shaft	64073	7054223032107	
45	"	sealing kidney	68341	7054223042102	
46	78662	pumping cylinder	19377	7054202010600	
47	15411	piston ram	43827	7154203012805	DN230
48		slewing pivot		10118218	
49		wearing insert	74768	705422101400-4	DN230
50		cutting ring 230			DN230

# SHOTCRETE PARTS

## HEAVY DUTY TYPE REDUSER PIPES



HEAVY DUTY TYPE REDUCERS AND COUPLINGS FOR SHOTCRETE BUSINESS

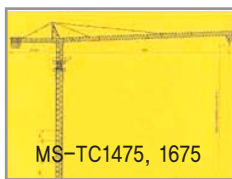


4INCH TO 3INCH HEAVY DUTY TYPE ELBOW WITH GASKETS & STEEL BALL



# PUMPING UNITS & PARTS

(Distributor, Placing Boom, Trailer Pumps, Tower Cranes)



Max. Load	Max. JIB Length	JIB (tip load)	Max Height of free standing
14 Ton	75 Meter	2.2 Ton	59.4 Meter
16 Ton	75 Meter	3.2 Ton	58.4 Meter



SLAB PIPE SUPPORT



FLOOR BRACKET

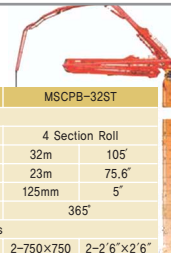
## MSCP90T,100T,110T

Superpower, High Technology, and Amazing productivity, DNCP realize the best work scope and profitability.



	MSCP90T		MSCP100T		MSCP110T		
Output	Rod Side	82 m³/hr	105 yd³/hr	100 m³/hr	130 yd³/hr	100 m³/hr	144 yd³/hr
	Piston Side	55 m³/hr	72 yd³/hr	68 m³/hr	89 yd³/hr	74 m³/hr	97 yd³/hr
Pressure	Rod Side	71bar	1,030psi	116bar	1,682psi	153bar	2,219psi
	Piston Side	106bar	1,537psi	172bar	2,495psi	224bar	3,249psi
Concrete Cylinder Diameter	200mm	7.9"	200mm	7.9"	200mm	7.9"	
Stroke Length	1,600mm	5' 3"	2,100mm	6' 11"	2,100mm	6' 11"	
No. of Strokes/Min	Rod Side	27		25		27	
	Piston Side	18		17		18	
Hopper Capacity	650L	23ft³	650L	23ft³	650L	23ft³	
Volume Control	Zero to full						
Hydraulic System	Closed-loop						
Hydraulic System Pressure	350bar	5,075psi	350bar	5,075psi	350bar	5,075psi	
Hydraulic Tank Capacity	250L	66gal	340L	75gal	340L	75gal	
Water Pump Pressure	20bar	290psi	20bar	290psi	20bar	290psi	
Outlet Diameter	150mm	6"	150mm	6"	150mm	6"	
Max Size Aggregate	63mm	2.5"	63mm	2.5"	63mm	2.5"	
Diesel Engine	Daewoo		DEUTZ		DEUTZ		
Engine Horsepower	151kw/205ps		261kw/355ps		261kw/355ps		

## MSCPB-32ST,28ST



	MSCPB-28ST		MSCPB-32ST		
	Boom Specifications				
Boom Design	4 Section Roll		4 Section Roll		
Vertical Reach	28m	91' 10"	32m	105'	
Horizontal Reach	21m	68' 11"	23m	75.6'	
Pipeline Diameter	125mm	5"	125mm	5"	
Rotation	365°		365°		
	General Specifications				
Column	Standard	2-750x750x10,000	2-2'6" x 2'6" x 32'10"	2-750x750x10,000	2-2'6" x 2'6" x 32'10"
	(Option)	(750x750x6,000)	(2'6" x 2'6" x 19'8")	(750x750x6,000)	(2'6" x 2'6" x 19'8")
Climbing System	Standard	Hydraulic		Hydraulic	
	(Option)	85x65-s1727	3.4' x 2.6" - 2' 3"	85x65-s1727	3.4' x 2.6" - 2' 3"
End Hose Length	4m	13' 2"	4m	13' 2"	
End Hose Diameter	125mm	5"	125mm	5"	
	System Specifications				
Power	40HP/30kw		40HP/30kw		
Hyd. Pump	23cc/rev		23cc/rev		
Control System	Boom	Remote Control	Remote Control	Remote Control	
	CLIMBING	Cable Control	Cable Control	Cable Control	
	Weight				
Boom Weight	4,100kg	9,039lbs	5,489kg	12,101lbs	
Turn Table Weight	Red Side	2,679kg	5,946lbs	2,750kg	6,063lbs
	Standard (10m-3'10" x 2PCS)	6,900kg	15,212lbs	6,900kg	15,212lbs
Column	Option (6m-19'8" x 3pcs)	7,080kg	15,608lbs	7,080kg	15,608lbs
	Ballast	2,450kg	5,401lbs	2,450kg	5,401lbs



CLEANING CAP ASS'Y



PIPE SEAT (S & D)



CLEANING PORTS



HOPPER (1.5M³)



CONCRETE DISTRIBUTOR (MSCD-10M to 16M)

	MSD10M	MSD12M	MSD13M	MSD16M
Boom Length	10M	12M	13M	16M
Pumping Radius	20M	24M	26M	32M
Weight	1.5TON	1.7TON	1.90TON	2.6TON
Balance Weight	540KG	580KG	620KG	700KG
Rotation Angle	360°	360°	360°	360°
Outrigger	0.8-1M	0.8-1M	0.8-1.2M	0.8-1.4M
Voltage	220/380/2P	220/380/2P	220/380/2P	220/380/2P
Compressor	3.75KW	3.75KW	3.75KW	3.75KW
Pumping unit	5HP	5HP	5HP	10HP

